

# Chess

## When New Zealand meets New Zealand

BOB WADE and myself are the only two professional chess players to come from New Zealand, and as we are both based in London we often look at games together or play five-minute chess. But Wade mainly writes and edits books nowadays and we had never actually met "over the board" until recently, when our rival clubs were

scheduled to meet twice in a week. London 1977

The games were real battles, and in the first one each of us thought we were winning at different stages. In our second duel, however, colours were reversed and Wade's only consolation was the fact that his club won overall both times. Charlton v Athenaeum

### CATALAN

M. Chandler	R. G. Wade (IM)
1. Nf3	d5
2. g3	Nf6
3. Bg2	e6
4. 0-0	Be7
5. d4	0-0
6. c4	dxc4
7. Qc2	c5?!

20. . . . Qb6  
21. Bd4! with a powerful position.

21. Nc8 Qa5?  
The best fighting chance is 21. . . . Qc7, suggested by Wade after the game. After 22. Nxa7 Qa5. 23. Bd4 Be7! 24. Nc8 Bf8, Black will first play 25. . . . Nfd7 and only then 26. . . . Qc7, to recover his pawn after 27. b4 Qxc8. I could keep my pawn in this line by 25. Bxc5 Bxc5. 26. e3! but the win would be technically difficult.

22. Bc3 Qa3  
23. Qd2!  
Winning, as the line of play followed is all forced. The threat is 24. Qxd8 ch etc.

23. . . . Bc7  
24. Bb4 Nce4  
25. Ne7 ch!

Forcing the king to an even worse square, and at the same time my knight is centralised for an attack on him.

25. . . . Kh8  
26. Bxe4 Nxe4  
27. Qd7 Qc1 ch  
28. Kg2 g6  
Or 28. . . . h5. 29. Qe8 ch Kh7. 30. Qg8 ch Kh6. 31. Qh8 ch and Qxg7 mate.

29. Qd4 ch f6  
If 29. . . . e5. 30. Qxe4 a5. 31. Bxa5!

30. Qxe4  
And Wade's flag fell as he was resigning.

MURRAY CHANDLER

Korchnoi v Tal, USSR 1968, reached equality after 7 . . . a6. 8. a4! Nc6! 9. Qxc4 Qd5. 10. Nbd2 Rd8. 11. e3 Qh5. 12. e4 Bd7. 13. b3 Rac8. To me, Wade's move seems to open the game prematurely for Black and his pieces will have trouble developing normally.

8. dxc5 Na6  
9. Na3 Nxc5  
10. Rd1 Qe8

Or 10. . . . Bd7 I had planned 11. Ne5 Rc8. 12. Nxd7! Nfxd7. 13. Nxc4 when White's two bishops claim the initiative.

11. Nxc4 Bd7  
12. Nfe5 Bb5

13. b3  
Not, of course, 13. Nd6 Bxd6. 14. Rxd6 Rc8 and Black is winning, two bishops or not.

13. . . . Rc8  
14. Bb2 Bxc4  
15. Nxc4 Qb5

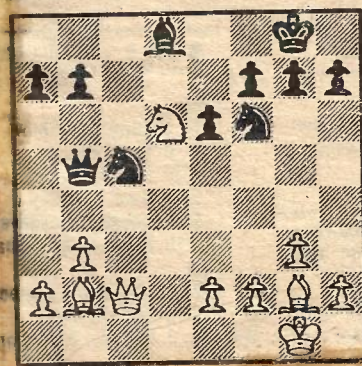
Perhaps Wade had planned 15. . . . b5 here, which succeeds after 16. Nd6 Bxd6. 17. Rxd6 Nce4!, but White has the surprising 16. Bxf6! gx f6 (or 16. . . . bxc4. 17. Bxe7 exb3. 18. Qxc5! with masses of material in exchange for the queen). 17. Nd6 Bxd6. 18. Rxd6 with an obvious positional advantage.

16. Rd4 Rfd8  
17. Rad1 Rxd4  
18. Rxd4 Rd8

The threat of 19. Nd6 was very strong, but now White wins material.

19. Rxd8 Bxd8  
20. Nd6!

R. G. WADE



M. CHANDLER